



Rd  
LUXE

RÊVE DE LUXE  
*Beauty*

IT'S ALL ABOUT FRENCH NATURAL COSMETICS



MADE IN FRANCE



It's all about French Natural Cosmetics

**RÊVE DE LUXE**  
*Beauty*  
Made In France

## OUR DREAM HISTORY

Explore the world of Luxe Beauty Dream, where beauty merges with science. Our brand was born from the vision of a passionate and innovative formulator. With many years of research in French cosmetic laboratories, Richard Girousse has always been driven by a relentless quest: to create products that sublimate the skin while respecting the nature and well-being of everyone.

Each texture is carefully designed, incorporating natural ingredients and cutting-edge formulas, to offer cosmetics, skincare and makeup, which revive faces and people.

Innovation is at the heart of our DNA. Richard Girousse firmly believes that every product must combine efficiency, safety, respect for the environment and above all bring pleasure. That's why our formulations are constantly improved, tested and approved by experts to ensure visible and lasting results.

At Rêve de Luxe Beauty, we have a deep respect for nature. Our ingredients are carefully selected for their purity and effectiveness, while being sourced in the natural kingdom. We prefer ingredients of vegetable or mineral origin to offer you exceptional cosmetics, with noble formulas, free of harmful substances, vegan and not tested on animals.

We are determined to continue to push the boundaries of cosmetics, remaining true to our mission to offer you the best of nature and science.

With Rêve de Luxe Beauty, embark on a journey of sensory pleasure and scientific immersion, where each product is a promise of beauty and well-being.

Thank you for dreaming with us and believing in our Dream of Luxury Beauty.





## MAKEUP FORMULA

### PRIMER

#### LUX'UP YOUR PRIMER

- PRIMER GLOWY
- PRIMER MAT
- PORE MINIMIZER

### FOUNDATION

#### LUX'UP YOUR FOUNDATION

- TINTED SERUM
- SOFT GLOW SKIN
- AQUA FLUID

### CONTOURING

#### LUX'UP YOUR CONTOURING

- NEW SKIN CONCEALER
- LIQUID BLUSH
- STICK BLUSH
- CLOUDY BLUSH CREAM
- JELLY HIGHLIGHTER

### EYES

#### LUX'UP YOUR EYES

- MASCARA
- CREAM EYESHADOW
- EYE BROW CORRECTOR

### LIPS

#### LUX'UP YOUR LIPS

- MATTE LIP CREAM
- LIPSTICK
- SHEER BALM
- LIP INK
- SPARKLING GLOSS

### POWDER

#### LUX'UP YOUR POWDER

- MATTE LOOSE POWDER
- LUMINOUS LOOSE POWDER





## SKIN CARE FORMULA

FLAWLESS

### LUX'UP YOUR FLAWLESS

- ANTI-WRINKLE CREAM
- HYDRATING FACE CREAM

SMOOTHER

### LUX'UP YOUR SMOOTH

- CHEEK FIRMING CREAM
- LIFTING CREAM

APPEAL

### LUX'UP YOUR APPEAL

- BRA FIRMING CREAM

PLUMPER

### LUX'UP YOUR PLUMP

- EYE & LIPS LIFTING CREAM
- FIRMING SERUM

CLEANSER

### LUX'UP YOUR CLEAN

- FOAMING CLEANSING CREAM



# RÊVE DE LUXE

*Beauty*

Made In France

## OUR DREAM COMMITMENTS



# RÊVE DE LUXE

*Beauty*

## LUX'UP YOUR PRIMER

### MATTE PRIMER

PRI 002  
RGSSW 24-042b

#### ACTIVE KEY INGREDIENTS:



#### PLANT COLLAGEN

Biomimethic collagen from wild plant, boost collagen synthesis, for healthy skin.



#### HYALURONIC ACID

Moisturizes, anti-wrinkles plumper, gives elasticity to the skin and tone.



#### PLANT RETINOL

Instant lifting effect, reduce pores, resurface skin microrelief.

#### KEY INGREDIENTS:



#### PLANT ORIGIN EMOLIENT

Emolient oil, for a shiny and comfortable result.



#### BAMBOO POWDER

Absorbent powder.



#### CLAY GEL & XANTHAN GUM

Quickbreak effect, surfactant free emulsifier.



#### ALGAE GEL

Creamy effect, brings comfort.



#### MAKEUP BENEFITS:



Natural



Long lasting



Matte



Absorbing



Comfortable



# LUX'UP YOUR PRIMER



## GLOWY PRIMER

THIS IS: glowy gel emulsion

WE LOVE: -pigments with  
hyaluronic acid  
-its aqueous and long  
lasting formula



## MATTE PRIMER

THIS IS: powdery gel emulsion  
WE LOVE: -its elastomer substitute  
silicone  
-silica and bamboo for a  
super soft matte effect



## CREAM TO POWDER

THIS IS: smoothing filler  
powdery cream  
WE LOVE: -ultra-comfortable  
-a non-drying powder

## LUX'UP YOUR PRIMER

### GLOWY PRIMER

PRI 001  
RGSSW 24-042a

#### ACTIVE KEY INGREDIENTS:



**PLANT COLLAGEN**  
Biomimethic collagen from wild plant, boost collagen synthesis, for healthy skin.



**HYALURONIC ACID**  
Moisturizes, anti-wrinkles plumper, gives elasticity to the skin and tone.



**PLANT RETINOL**  
Instant lifting effect, reduce pores, resurface skin microrelief.

#### KEY INGREDIENTS:



**PEARL PIGMENTS**  
Ensures long lasting hold and improves water resistance.



**ACID HYALURONIC**  
Improves skin shine and radiance.



**POLYMER**  
Fixatives, film former.



**EMOLLIENT**  
Moistirzes and protect the skin.



#### MAKEUP BENEFITS:



Natural



Long lasting



Hydrating



Luminous



Comfortable





## LUX'UP YOUR PRIMER

### CREAM TO POWDER

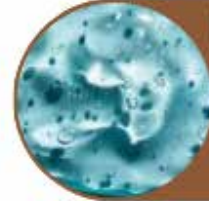
PRI 003  
RGSSW 24-042c

#### ACTIVE KEY INGREDIENTS:



##### PLANT COLLAGEN

Biomimethic collagen from wild plant, boost collagen synthesis, for healthy skin.



##### HYALURONIC ACID

Moisturizes, anti-wrinkles plumper, gives elasticity to the skin and tone.



##### PLANT RETINOL

Instant lifting effect, reduce pores, resurface skin microrelief.

#### KEY INGREDIENTS:



##### PLANT BASED EMOLIENT

Adds emollience to the product.



##### BAMBOO POWDER

Absorbent powder.



##### PLANT BASED POLYMER

Second-skin effect, resurfacing.



##### SILICA COMPLEX

Smoothing powder, soft focus effect.



#### MAKEUP BENEFITS:



Natural



Long lasting



Soft focus



Absorbing



Comfortable



# LUX'UP YOUR FOUNDATION



## TINTED SERUM

THIS IS: light covering and glow hybrid emulsion fluid  
WE LOVE: -a tinted skincare  
-the glow thanks to reflective powders and active radiance ingredients.



## SOFT GLOW SKIN

THIS IS: light luminous pigmented emulsion  
WE LOVE: its radiant boosting effect.



## AQUA FLUID

THIS IS: light watery feel emulsion  
WE LOVE: -emulsifying clay  
-its watery and quick break gel texture

## LUX'UP YOUR FOUNDATION TINTED SERUM

FDT 001  
RGSSW 24-042d

### ACTIVE KEY INGREDIENTS:



#### PLANT COLLAGEN

Biomimethic collagen from wild plant, boost collagen synthesis, for healthy skin.



#### HYALURONIC ACID

Moisturizes, anti-wrinkles plumper, gives elasticity to the skin and tone.



#### PLANT RETINOL

Instant lifting effect, reduce pores, resurface skin microrelief.

### KEY INGREDIENTS:



#### PRIMROSE OIL

Emollient, nourishing and hydrating.



#### CLAY GEL

Gives a feeling of softness.



#### ESTER EMOLLIENT

Improves skin shine and radiance.



#### PLANT EXTRACTS ACTIV COMPLEX

Smoothing effect and improves skin radiance.

### MAKEUP BENEFITS:



Natural



Soft focus



Hydrating



Luminous



Comfortable



ICING SUGAR

CHANTILLY CREAM

UNBAKED BISCUIT

COTTON CANDY

PRALINE

CARAMEL

CAPUCCINO

HAZELNUT

HOT CHOCOLATE

COCOA

## LUX'UP YOUR FOUNDATION

### SOFT GLOW SKIN

FDT 002  
RGSSW 24-042e

#### ACTIVE KEY INGREDIENTS:



**PLANT COLLAGEN**  
Biomimethic collagen from wild plant, boost collagen synthesis, for healthy skin.



**HYALURONIC ACID**  
Moisturizes, anti-wrinkles plumper, gives elasticity to the skin and tone.



**PLANT RETINOL**  
Instant lifting effect, reduce pores, resurface skin microrelief.

#### KEY INGREDIENTS:



**EMOLLIENT**  
to improve the gliding, not drying effect.



**PLANT BASED POLYMER**  
Second-skin effect, resurfacing.



**DEXTRIN FILM**  
Fixative long lasting.



**PLANT AMINO ACID COATED PIGMENT**  
Long lasting, water resistant and shade stability.



#### MAKEUP BENEFITS:



Natural



Soft focus



Hydrating



Luminous



Gliding



ICING SUGAR

CHANTILLY CREAM

UNBAKED BISCUIT

COTTON CANDY

PRALINE

CARAMEL

CAPUCCINO

HAZELNUT

HOT CHOCOLATE

COCOA

## LUX'UP YOUR FOUNDATION

### AQUA FLUID

FDT 003  
RGSSW 24-042f

#### ACTIVE KEY INGREDIENTS:



##### PLANT COLLAGEN

Biomimethic collagen from wild plant, boost collagen synthesis, for healthy skin.



##### HYALURONIC ACID

Moisturizes, anti-wrinkles plumper, gives elasticity to the skin and tone.



##### PLANT RETINOL

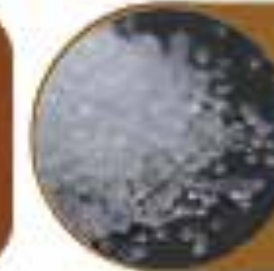
Instant lifting effect, reduce pores, resurface skin microrelief.

#### KEY INGREDIENTS:



##### XANTHAN GUM

Gives an airy and fresh texture.



##### SILICA

Ensures a soft touch and soft focus effect.



##### COATED PIGMENTS LIPOPHILIC

Ensures long lasting hold and improves water resistance.



##### CLAY GEL

Quick break effect and surfactant free emulsifier.

#### MAKEUP BENEFITS:



Natural



Long lasting



Creamy



Luminous



Comfortable



ICING SUGAR

CHANTILLY CREAM

UNBAKED BISCUIT

COTTON CANDY

PRALINE

CARAMEL

CAPUCCINO

HAZELNUT

HOT CHOCOLATE

COCOA

# LUX'UP YOUR CONTOURING



## 2ND SKIN CONCEALER

THIS IS: smoothing fluid emulsion concealer  
WE LOVE: -its crazy soft touch  
-its unified blur



## LIQUID BLUSH

THIS IS: nude blush fluid emulsion  
WE LOVE: -its long lasting formula  
-its natural glow

# LUX'UP YOUR CONTOURING



## STICK BLUSH

THIS IS: soft pigmented stick

WE LOVE: Its comfortable and gliding application.



## CLOUDY BLUSH CREAM

THIS IS: pigmented cloudy cream

WE LOVE: -Ultra emollient texture  
-Easily blendable with glowy effect



## JELLY HIGHLIGHTER

THIS IS: pearly gel light emulsion

WE LOVE: -its glow and radiance  
-its covering AND plant-based elastomer

## LUX'UP YOUR CONTOURING

### NEW SKIN CONCEALER

CON 001  
RGSSW 24-042g

#### ACTIVE KEY INGREDIENTS:



**PLANT COLLAGEN**  
Biomimethic collagen from wild plant, boost collagen synthesis, for healthy skin.



**HYALURONIC ACID**  
Moisturizes, anti-wrinkles plumper, gives elasticity to the skin and tone.



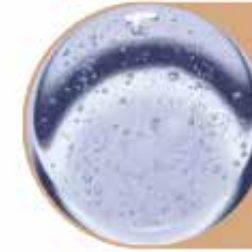
**PLANT RETINOL**  
Instant lifting effect, reduce pores, resurface skin microrelief.

#### KEY INGREDIENTS:



**SILIICA**

Ensures a soft touch and soft focus effect.



**GLYCERIN**

Moisturize the undereye.



**DEXTRIN FILM**

Fixative long lasting.



**PLANT AMINO ACIDS COATED PIGMENTS**

Long lasting, water resistant and shade stability.



#### MAKEUP BENEFITS:

●●●●●●●●●●●●●●●●●●●●  
Natural

●●●●●●●●●●●●●●●●●●●●  
Luminous

●●●●●●●●●●●●●●●●●●●●  
Covering

●●●●●●●●●●●●●●●●●●●●  
Long lasting

●●●●●●●●●●●●●●●●●●●●  
Comfortable

●●●●●●●●●●●●●●●●●●●●  
Creamy



CLOUD

PORCELAIN

VANILLA

PERAL

SAND

LATTE

SPICED RHUM



## LUX'UP YOUR BLUSH

### LIQUID BLUSH

BLUSH 001  
RGSSW 24-042h

#### ACTIVE KEY INGREDIENTS:



##### PLANT COLLAGEN

Biomimethic collagen from wild plant, boost collagen synthesis, for healthy skin.



##### HYALURONIC ACID

Moisturizes, anti-wrinkles plumper, gives elasticity to the skin and tone.



##### PLANT RETINOL

Instant lifting effect, reduce pores, resurface skin microrelief.

#### KEY INGREDIENTS:



##### SILICA GRAFTED MICA COMPOSITE

Soft focus effect, blurs the imperfections.



##### PLANT GLYCERIN

Hydrating and luminous.



##### PLANT AMINO ACIDS COATED PIGMENTS

Long lasting, water resistant and shade stability.



##### DEXTRINE FILM

Long lasting effect.



#### MAKEUP BENEFITS:



Natural



Long lasting



Cushion



Luminous

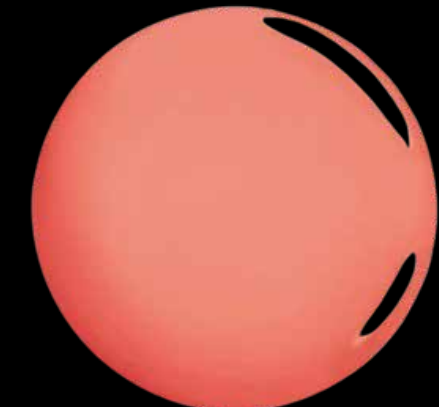


Comfortable

DELICATE MAUVE



VIVID CORAL



BOLD PINK



## LUX'UP YOUR BLUSH

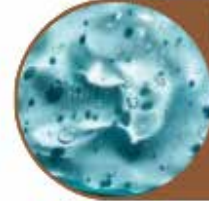
### STICK BLUSH

BLUSH 002  
RGSSW 24-042i

#### ACTIVE KEY INGREDIENTS:



**PLANT COLLAGEN**  
Biomimethic collagen from wild plant, boost collagen synthesis, for healthy skin.



**HYALURONIC ACID**  
Moisturizes, anti-wrinkles plumper, gives elasticity to the skin and tone.



**PLANT RETINOL**  
Instant lifting effect, reduce pores, resurface skin microrelief.

#### KEY INGREDIENTS:



**SUGARCANE WAX**  
Antioxidant, moisturizes, slippery and shiny effect.



**PLANT GEL POLYMER**  
Guarding against UV, transdermal water loss.



**MANGO BUTTER**  
Emollient and antioxidant properties, intense hydration.



**SUN FLOWER WAX**  
Moisturizes, reeplenish the lips.



#### MAKEUP BENEFITS:



Natural



Long lasting



Creamy



Luminous

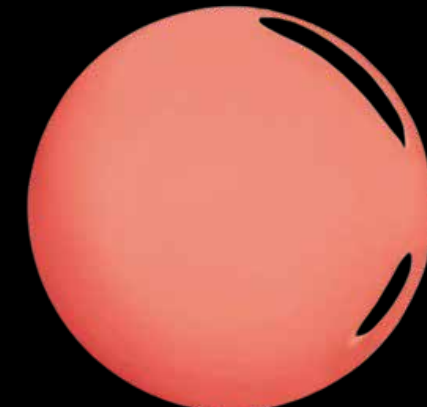


Comfortable

DELICATE MAUVE



VIVID CORAL



BOLD PINK



## LUX'UP YOUR BLUSH

### CLOUDY BLUSH CREAM

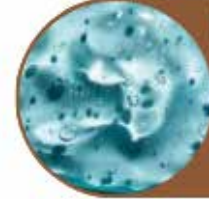
BLUSH 003  
RGSSW 24-042j

#### ACTIVE KEY INGREDIENTS:



##### PLANT COLLAGEN

Biomimethic collagen from wild plant, boost collagen synthesis, for healthy skin.



##### HYALURONIC ACID

Moisturizes, anti-wrinkles plumper, gives elasticity to the skin and tone.



##### PLANT RETINOL

Instant lifting effect, reduce pores, resurface skin microrelief.

#### KEY INGREDIENTS:



##### SQUALANE ORIGIN ORGANIC

Sensory oil, suitable for baby formulations, hydrates non-greasy finish



##### SILICA

Brightens the complexion and soft touch effect.



##### PIGMENTS PEARL

Ensures long lasting hold and improves water resistance.



##### MANGO BUTTER

Soothing, skin protector, emollient, softener, anti-oxidant

#### MAKEUP BENEFITS:



Natural



Long lasting



Fusing effect



Luminous



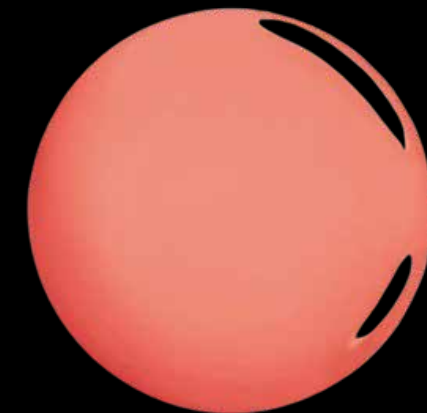
Comfortable



DELICATE MAUVE



VIVID CORAL



BOLD PINK



## LUX'UP YOUR HIGHLIGHTER

### JELLY HIGHLIGHTER

HIGH 001  
RGSSW 24-042k

#### ACTIVE KEY INGREDIENTS:



##### PLANT COLLAGEN

Biomimethic collagen from wild plant, boost collagen synthesis, for healthy skin.



##### HYALURONIC ACID

Moisturizes, anti-wrinkles plumper, gives elasticity to the skin and tone.



##### PLANT RETINOL

Instant lifting effect, reduce pores, resurface skin microrelief.

#### KEY INGREDIENTS:



##### ORGANIC ELASTOMER

Improves comfort and sensoriality .



##### COCONUT OIL

Nourishing, hydrating.



##### DEXTRIN FILM

Fixative, long lasting.



##### NATURAL MICA PEARLS

Brings radiance and light.

#### MAKEUP BENEFITS:



# LUX'UP YOUR EYES



## MASCARA

THIS IS: intense black fluid

WE LOVE: -thickness of eyelashes  
-the volume effect with  
the specific brush



## CREAM EYESHADOW

THIS IS: Pearly cloudy cream

WE LOVE: -ultra emollient texture  
-Easily blendable with  
sparkeling effect



## EYE BROW CORRECTOR

THIS IS: creamy pigmented  
emulsion

WE LOVE: -its long lasting  
-its waterproof  
propertise

## LUX'UP YOUR MASCARA

### MASCARA

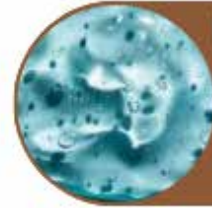
MSC 001  
RGSSW 24-0421

#### ACTIVE KEY INGREDIENTS:



##### PLANT COLLAGEN

Biomimetic collagen from wild plant, boost collagen synthesis, for healthy skin.



##### HYALURONIC ACID

Moisturizes, anti-wrinkles plumper, gives elasticity to the skin and tone.



##### PLANT RETINOL

Instant lifting effect, reduce pores, resurface skin microrelief.

#### KEY INGREDIENTS:



##### BEEES/ CANDELLILA WAX SUBSTITUTES

To improves lenght and curves of lashes.



##### CASTOR OIL

Nourish and promote healthy eyelashes growth.



##### POLYPEPTIDES COMPLEX

Activates the regeneration and growth of the eyelashes.



##### RICE STARCH & CELLULOSE

Strengthens lashes and improves volume.



#### MAKEUP BENEFITS:



Natural



Long lasting



Combing



Definition



Volume effect



## LUX'UP YOUR EYESHADOW

### CREAM EYESHADOW

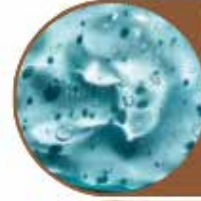
EYE 001  
RGSSW 24-042m

#### ACTIVE KEY INGREDIENTS:



##### PLANT COLLAGEN

Biomimethic collagen from wild plant, boost collagen synthesis, for healthy skin.



##### HYALURONIC ACID

Moisturizes, anti-wrinkles plumper, gives elasticity to the skin and tone.



##### PLANT RETINOL

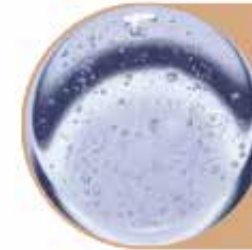
Instant lifting effect, reduce pores, resurface skin microrelief.

#### KEY INGREDIENTS:



##### SILICA

Ensures a soft touch and soft focus effect.



##### GLYCERIN

Moisturize the undereye.



##### DEXTRIN FILM

Fixative long lasting.



##### PLANT AMINO ACIDS COATED PIGMENTS

Long lasting, water resistant and shade stability.



#### MAKEUP BENEFITS:



Natural



Stability



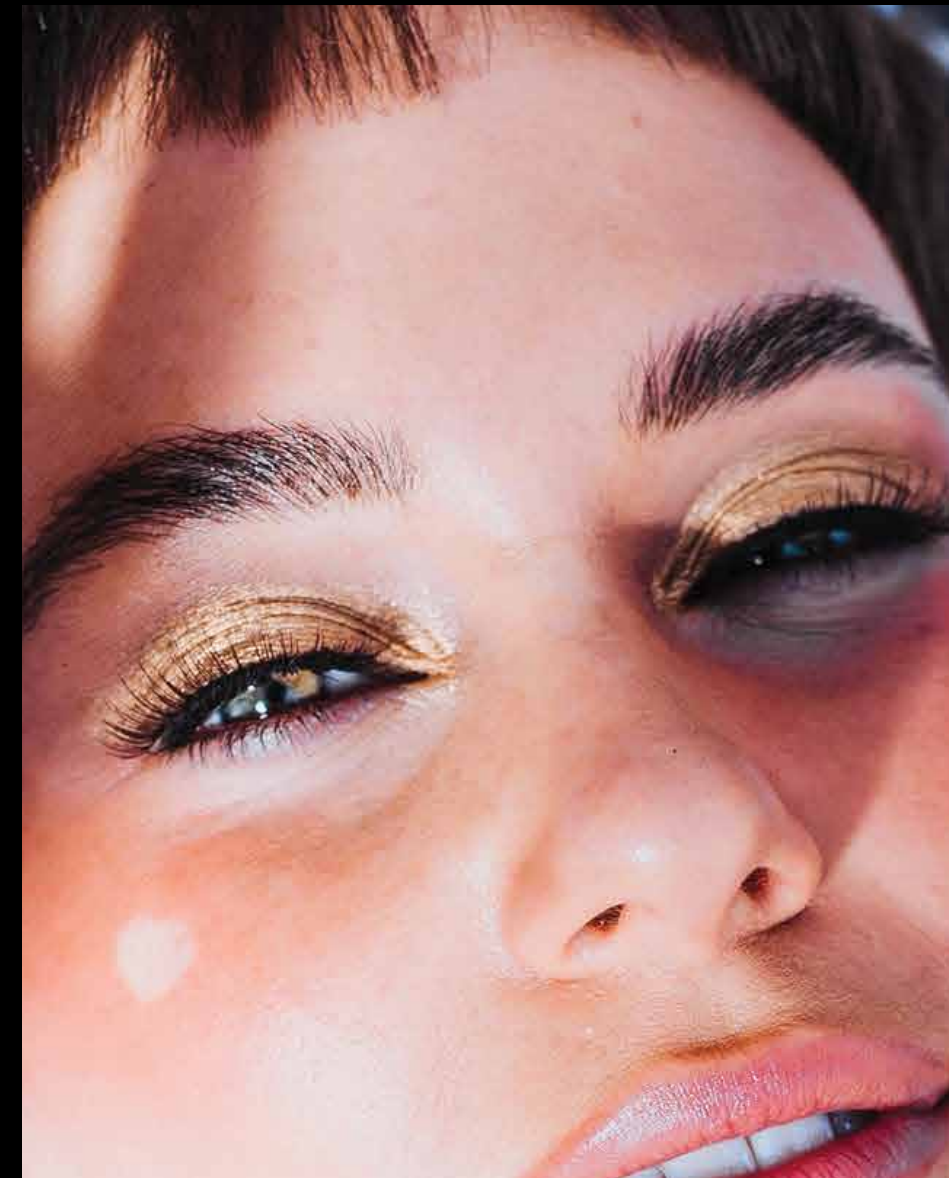
Long lasting



Non-transfert



Comfortable



## LUX'UP YOUR EYE BROW

### EYE BROW CORRECTOR

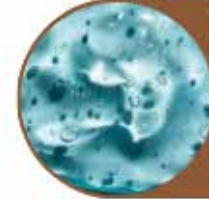
BROW 001  
RGSSW 24-042n

#### ACTIVE KEY INGREDIENTS:



##### PLANT COLLAGEN

Biomimethic collagen from wild plant, boost collagen synthesis, for healthy skin.



##### HYALURONIC ACID

Moisturizes, anti-wrinkles plumper, gives elasticity to the skin and tone.



##### PLANT RETINOL

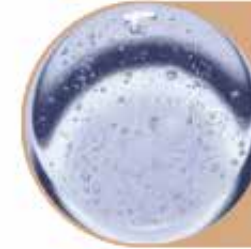
Instant lifting effect, reduce pores, resurface skin microrelief.

#### KEY INGREDIENTS:



##### SILICA

Ensures a soft touch and soft focus effect.



##### GLYCERIN

Moisturize the undereye.



##### DEXTRIN FILM

Fixative long lasting.



##### PLANT AMINO ACIDS COATED PIGMENTS

Long lasting, water resistant and shade stability.

#### MAKEUP BENEFITS:



Natural



Combing effect



Long lasting



Water-resistant



Untouchable





# LUX'UP YOUR LIPS



## MATTE LIP CREAM

THIS IS: Liquid lip matte

WE LOVE: -Matte finish  
and transfert  
proof  
-Care product  
(not drying lip)



## LIPSTICK

THIS IS: creamy velvet  
stick

WE LOVE: -High  
pigmented  
color



## SHEER BALM

THIS IS: creamy  
nourishing balm

WE LOVE: -good pay off  
-not drying lips



## LIP INK

THIS IS: a pigmented  
liquid gel

WE LOVE: -it doesn't dry  
lips  
-very light  
coverage



## SPARKLING GLOSS

THIS IS: a light pigmented  
shimmery liquid  
gel




WE LOVE: -its long lasting  
formula  
-its natural  
glow

## LUX'UP YOUR LIPS

### MATTE LIP CREAM

LIP 001  
RGSSW 24-042o

**ACTIVE KEY INGREDIENTS:**

- 
**PLANT COLLAGEN**  
 Biomimethic collagen from wild plant, boost collagen synthesis, for healthy skin.
- 
**HYALURONIC ACID**  
 Moisturizes, anti-wrinkles plumper, gives elasticity to the skin and tone.
- 
**PLANT RETINOL**  
 Instant lifting effect, reduce pores, resurface skin microrelief.

**KEY INGREDIENTS:**

- 
**VOLATIL OIL FROM PLANTS SOURCES**  
 Fix the makeup.
- 
**KAHJELLY COCO**  
 Organic wax, shiny effect, nourishing, film-forming.
- 
**DEXTRIN FILM**  
 Stabilizes the product, moisturizing and soothing effect.
- 
**PLANT GEL POLYMER**  
 Sticky effect, vaseline like, care active.



**MAKEUP BENEFITS:**

- Natural
- Long lasting
- Non-transfert
- Matte effect
- Comfortable



## LUX'UP YOUR LIPS

### LIPSTICK

LIP 002

RGSSW 24-042p

#### ACTIVE KEY INGREDIENTS:



##### PLANT COLLAGEN

Biomimethic collagen from wild plant, boost collagen synthesis, for healthy skin.



##### HYALURONIC ACID

Moisturizes, anti-wrinkles plumper, gives elasticity to the skin and tone.



##### PLANT RETINOL

Instant lifting effect, reduce pores, resurface skin microrelief.

#### KEY INGREDIENTS:



##### CARNAUBA WAX

Film-forming properties, protective barrier, gloss and shine.



##### ACID HYALURONIC

Improves hydration.



##### JAUJAUBA ESTHER

A lips care & good sensoriality.



##### PEPTIDES

Stimulates the production of collagen and hyaluronic acid.



#### MAKEUP BENEFITS:



Natural



Gliding



Nourishing

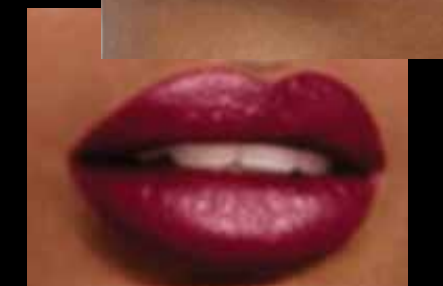


Intense color



Comfortable

AFTERNOON TEA  
BIG CITY  
CLARET  
NEUTRAL ROSE  
SUNSET ROSE  
DOWNTOWN ROSE  
RED CARPET  
AFTER HOURS



## LUX'UP YOUR LIPS

### SHEER BALM

LIP 003

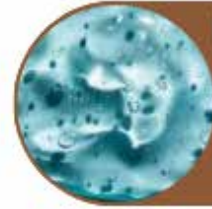
RGSSW 24-042q

#### ACTIVE KEY INGREDIENTS:



##### PLANT COLLAGEN

Biomimethic collagen from wild plant, boost collagen synthesis, for healthy skin.



##### HYALURONIC ACID

Moisturizes, anti-wrinkles plumper, gives elasticity to the skin and tone.



##### PLANT RETINOL

Instant lifting effect, reduce pores, resurface skin microrelief.

#### KEY INGREDIENTS:



##### VOLATIL OIL FROM PLANTS SOURCES

Fix the makeup.



##### ORGANIC SQUALAN

Multifonctionnal emollient, good sensoriality, gliding effect



##### DEXTRIN FILM

Stabilizes the product, moisturizing and soothing effect.



##### CASTOR OIL POLYMER

Moisturizing and nourishing effect.



#### MAKEUP BENEFITS:



Natural



Covering



Nourishing



Shiny effect



Comfortable

AFTERNOON TEA  
BIG CITY  
CLARET  
NEUTRAL ROSE  
SUNSET ROSE  
DOWNTOWN ROSE  
RED CARPET  
AFTER HOURS



## LUX'UP YOUR LIPS

### LIP INK

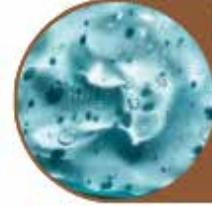
LIP 004  
RGSSW 24-042r

#### ACTIVE KEY INGREDIENTS:



##### PLANT COLLAGEN

Biomimethic collagen from wild plant, boost collagen synthesis, for healthy skin.



##### HYALURONIC ACID

Moisturizes, anti-wrinkles plumper, gives elasticity to the skin and tone.



##### PLANT RETINOL

Instant lifting effect, reduce pores, resurface skin microrelief.

#### KEY INGREDIENTS:



##### VOLATIL OIL FROM PLANTS SOURCES

Fix the makeup.



##### ORGANIC EMOLLIENT

Improves the gliding, not drying effect.



##### DEXTRIN FILM

Stabilizes the product, moisturizing and soothing effect.

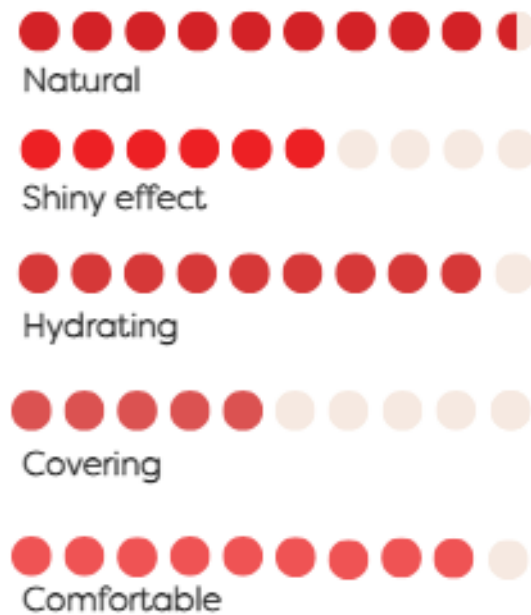


##### CASTOR OIL POLYMER

Moisturizing and nourishing effect.



#### MAKEUP BENEFITS:



AFTERNOON TEA  
BIG CITY  
CLARET  
NEUTRAL ROSE  
SUNSET ROSE  
DOWNTOWN ROSE  
RED CARPET  
AFTER HOURS



## LUX'UP YOUR LIPS

### SPARKLING GLOSS

LIP 005  
RGSSW 24-042s

#### ACTIVE KEY INGREDIENTS:



##### PLANT COLLAGEN

Biomimethic collagen from wild plant, boost collagen synthesis, for healthy skin.



##### HYALURONIC ACID

Moisturizes, anti-wrinkles plumper, gives elasticity to the skin and tone.



##### PLANT RETINOL

Instant lifting effect, reduce pores, resurface skin microrelief.

#### KEY INGREDIENTS:



##### PLANT ORIGIN EMOLLIENT

Emollient oil, for a shiny and comfortable result.



##### BLACK CUMIN OIL

Nourishing oil.



##### DEXTRIN FILM

Long lasting effect, and coverage.



##### MINERAL CLAY GEL

Ensures product coverage.



#### MAKEUP BENEFITS:



Natural



Shiny effect



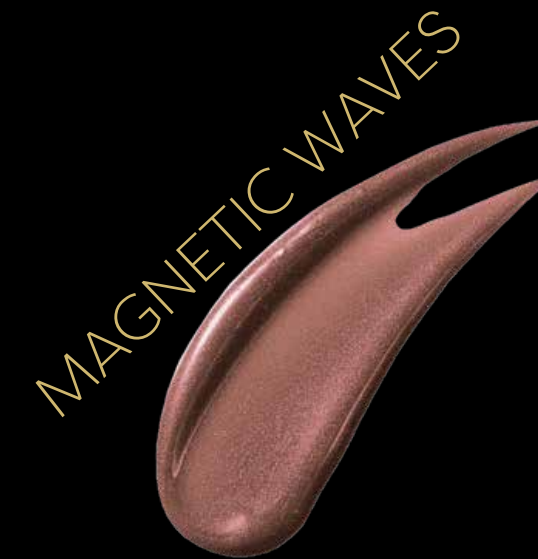
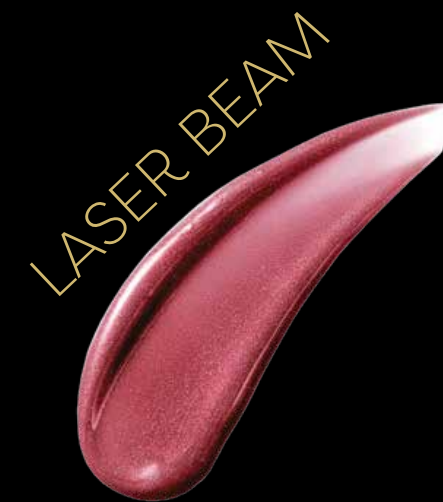
Hydrated



Covering



Comfortable



# LUX'UP YOUR POWDER



## MATTE LOOSE POWDER

THIS IS: ultrafine soft matte loose powder  
WE LOVE: -its softness  
-silica and bamboo



## LUMINOUS LOOSE POWDER

THIS IS: ultrafine soft light loose powder  
WE LOVE: -its soft glow -its non drying sensory

## LUX'UP YOUR POWDER


### MATTE LOOSE POWDER

PWD 001  
RGSSW 24-042t

#### ACTIVE KEY INGREDIENTS:



**PLANT COLLAGEN**  
Biomimetic collagen from wild plant, boost collagen synthesis, for healthy skin.



**HYALURONIC ACID**  
Moisturizes, anti-wrinkles plumper, gives elasticity to the skin and tone.



**PLANT RETINOL**  
Instant lifting effect, reduce pores, resurface skin microrelief.

#### KEY INGREDIENTS:



**PLANT ORIGIN EMOLLIENT**  
Emollient oil, for a shiny and comfortable result.



**LAMELLAR MICA**  
Ensures the powder's matte finish.



**OIL CONTROL ACTIV EXTRACT**  
Lilac extract, controls sebum excess.



**NIACINAMIDE**  
Maintains skin's hydration.



#### MAKEUP BENEFITS:

●●●●●●●●●●●●●●●●●●

Natural

●●●●●●●●●●●●●●●●

Soft focus

●●●●●●●●●●●●●●●●

Absorbing

●●●●●●●●●●●●●●●●

Matte

●●●●●●●●●●●●●●●●

Superfine





## LUX'UP YOUR POWDER

### LUMINOUS LOOSE POWDER

PWD 002  
RGSSW 24-042u

#### ACTIVE KEY INGREDIENTS:

- 
**PLANT COLLAGEN**  
 Biomimethic collagen from wild plant, boost collagen synthesis, for healthy skin.
- 
**HYALURONIC ACID**  
 Moisturizes, anti-wrinkles plumper, gives elasticity to the skin and tone.
- 
**PLANT RETINOL**  
 Instant lifting effect, reduce pores, resurface skin microrelief.

#### KEY INGREDIENTS:

- 
**PLANT ORIGIN EMOLLIENT**  
 Emollient oil, for a shiny and comfortable result.
- 
**LAMELLAR MICA**  
 Ensures the powder's matte finish.
- 
**ALOE VERA POWDER**  
 Maintains skin's hydration.
- 
**CLAY**  
 Absorbent benefits, controls excess of sebum.



#### MAKEUP BENEFITS:

- 
 Natural
- 
 Luminous
- 
 Absorbing
- 
 Soft focus
- 
 Creamy touch



# LUX'UP YOUR FLAWLESS



## ANTI-WRINKLE CREAM

THIS IS: ultrafine soft matte loose powder

WE LOVE: -its softness  
-silica and bamboo



## HYDRATING FACE CREAM

THIS IS: Light weight active cream emulsion

WE LOVE: -multi benefits  
-soft texture

# RÊVE DE LUXE *Beauty*

## LUX'UP YOUR FLAWLESS ANTI-WRINKLE CREAM

FO1917-01.06

### ACTIVE KEY INGREDIENTS:



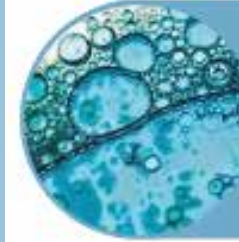
#### GREEN TEA OIL

Decreases oil production and sebum, anti-inflammatory.



#### IRIS EXTRACT

Smooths fine lines, activates the exfoliation process, revitalizes and hydrates.



#### PEPTIDE

Stimulates regenerates NMF, redensifies the protein structure. Improves skin barrier.



#### AVOCADO OIL

Contains vitamin E, reduces the signs of aging, protects from UV.



### SKIN CARE BENEFITS:



Wrinkles reduction



Hydration



Elasticity



Soothing



Skin brightness



# RÊVE DE LUXE *Beauty*

## LUX'UP YOUR FLAWLESS HYDRATING FACE CREAM

FO1917-01.06

### ACTIVE KEY INGREDIENTS:



#### ALPHA BISABOLOL

Well known soothing agent.



#### HYALURONIC ACID

Absorbs water, deeply hydrates, moisturizes skin.



#### PEPTIDE

Stimulates regenerates NMF, redensifies the protein structure. Improve skin barrier



#### AQUAXYL

Xylitol humectant. 3D hydration, boost Hyaluronic acid and ceramides.



#### ACAI BERRY

Prevents early sign of aging, helps with skin regeneration.



### SKIN CARE BENEFITS:



Redensify



Hydration



Strengthen skin barrier



Soothing



Dewy finish



# LUX'UP YOUR SMOOTH



## CHEEK FIRMING CREAM

THIS IS: Concentrated activ serum

WE LOVE: High effective actives to



## LIFTING CREAM

THIS IS: A melting, soft face cream

WE LOVE: -Face cream that  
regenerates  
-Firms and restructures  
the skin.

## LUX'UP YOUR SMOOTH CHEEK FIRMLING CREAM

FO1794-01.05

### KEY INGREDIENTS:



#### VEGAN COLLAGEN

Boost collagen production, improve skin elasticity, hydration, and wrinkling.



#### RETINOL

Increased skin cell production, unclogged pores, exfoliation.



#### PEPTIDES BLEND

Improved skin barrier, helps to fade fine lines and wrinkles, more elastic skin.



#### LIPOSOMES

Vitamin C, occlusive layer, prevents water loss.



### SKIN CARE BENEFITS:



Densify



Collagen booster



Moisturize



Anti wrinkles



Skin brightness



## LUX'UP YOUR SMOOTH LIFTING CREAM

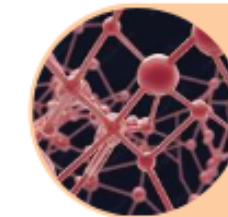
FO1103-04.01

### KEY INGREDIENTS:



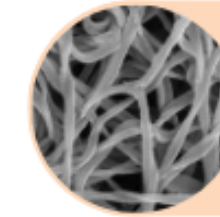
#### FRUIT CELL EXTRACT

Deeply hydrating, and rich in vitamins A and C as well as lycopene.



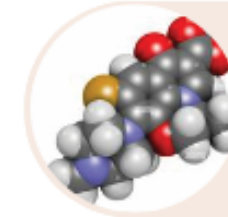
#### ADENOSINE

Anti-aging, soothing, restoring the skin.



#### BIOMETRIC COLLAGEN

Improve the overall look and feel of skin



#### TETRA-PEPTIDE

Stimulate collagen production, improve skin texture tone, reduces fine lines and wrinkles.



### SKIN CARE BENEFITS:



Skin rejuvenation



Elasticity



Density



Hydration



Radiant healthy skin



# LUX'UP YOUR APPEAL



## **BRA FIRING CREAM**

---

THIS IS: bra gel cream

WE LOVE: Soft & délicats, for cool effect



## LUX'UP YOUR APPEAL BRA FIRMING CREAM

FO0586-01.02

### KEY INGREDIENTS:



#### SHEA BUTTER

Deep hydration, contains vitamin A, E & F.



#### AVOCADO OIL

Regenerating, protective, nourishing and fortifying.



#### OAT OIL

Rich in vitamin E, fight the signs of aging.



#### PHOSPHOLIPID

Bring flexibility and fluidity to cell.



### SKIN CARE BENEFITS:



Natural



Deep hydration



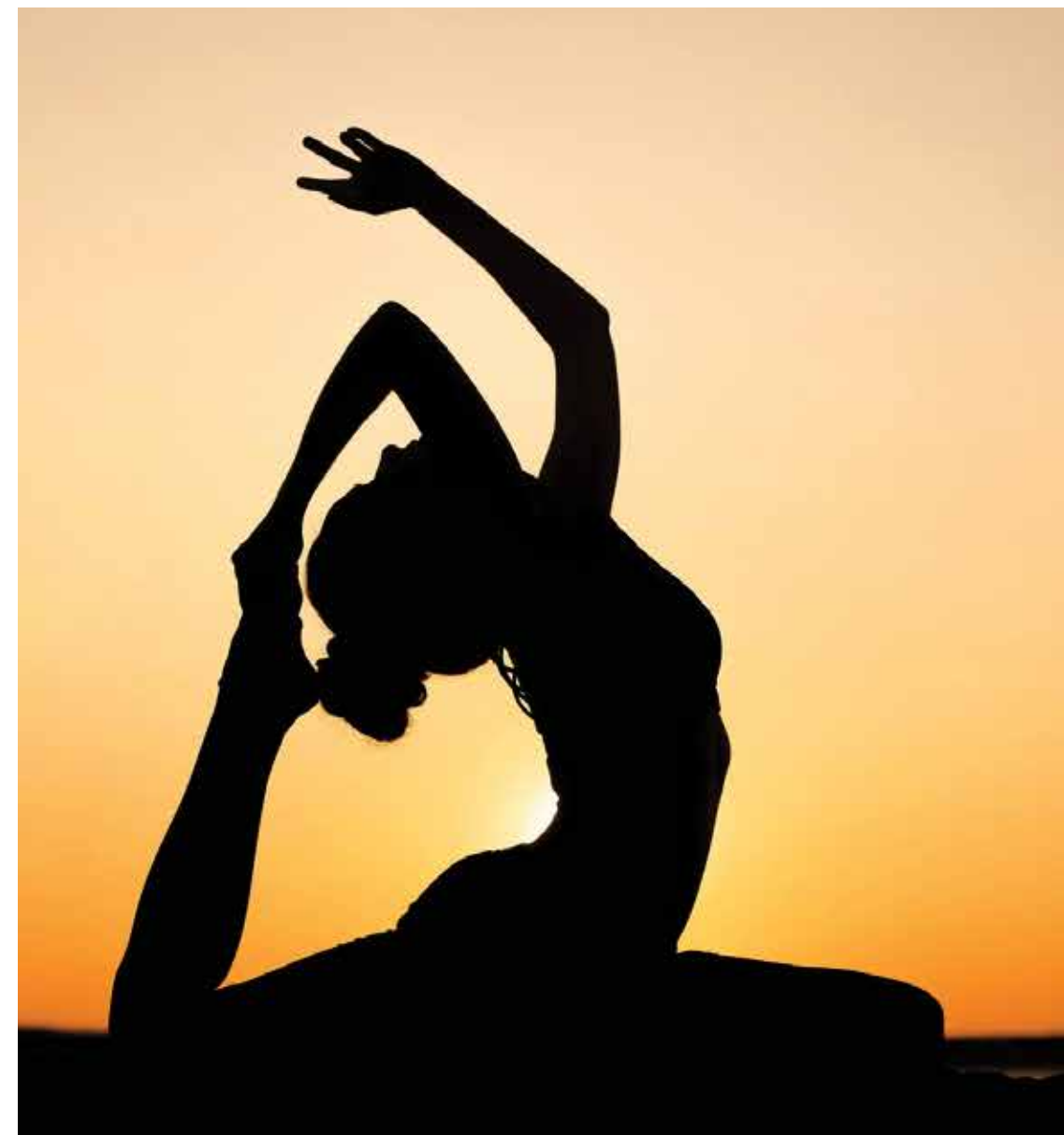
Elasticize



Protective barrier



Bouncy effect



# LUX'UP YOUR PLUMP



## EYE & LIPS LIFTING CREAM

---

THIS IS: multi corrective cushion cream

WE LOVE: its skin firming and bouncy effect



## FIRMING SERUM

---

THIS IS: A lightweight serum


WE LOVE: easily absorbed serum with pool of actives complex


## LUX'UP YOUR PLUMP

### EYE & LIPS LIFTING CREAM

FO1917-01.06

**ACTIVE KEY INGREDIENTS:**

 <p><b>HA POLYMER</b> Improve skin barrier function, improves skin elasticity, reduces skin cell damage due to UV.</p>	 <p><b>ASTAXANTHIN</b> Able to increase skin moisture, elasticity, as well as promote skin smoothness, decreasing fine lines and wrinkles.</p>
 <p><b>EXOSOMES</b> Watermelon &amp; grapefruit extract, essential amino acid content directly providing cells with more energy.</p>	 <p><b>AMINO ACID</b> Antioxidative, anti-inflammatory, anti-aging properties, improve skin hydration, reduce fine lines.</p>



EYE & LIPS  
FO2096-01.02  
2024060408

**MAKEUP BENEFITS:**

- Natural
- Hydratation
- Filling effect
- Plumped effect
- Protect




# RÊVE DE LUXE *Beauty*

## LUX'UP YOUR PLUMP FIRMING SERUM

FO2011-01.01

**ACTIVE KEY INGREDIENTS:**

- PHOTOSPHINGOSINE**  
treating acne and inflammatory skin conditions like eczema.
- COMPLEX CERAMIDS**  
Maintains skin barrier, boosts hydration, Protects against UV damage.
- FATTY ACIDS**  
Improved hydration, reduced inflammation, and promotion of healthy cell growth.



**SKIN CARE BENEFITS:**

- Densify
- Collagen booster
- Moisturize
- Anti wrinkles
- Skin brightness



# LUX'UP YOUR CLEAN



## FOAMING CLEANSER CREAM

---

**THIS IS:** A transforming gel-to-oil cleanser

**WE LOVE:** Delicate on all skin types and leaving skin hydrated

# RÊVE DE LUXE *Beauty*

## LUX'UP YOUR CLEAN FOAMING CLEANSER CREAM

FO1788/050001336



### SKIN CARE BENEFITS:



### ACTIVE KEY INGREDIENTS:



#### PRICKLY PEAR EXTRACT

Reducing appearances of dark spots, hyperpigmentation uneven skin tone.



#### SUGAR ORIGIN BETAINE

offering hydration, softness and potentially an improvement in skin tone.



#### SQUALANE

Calms inflammation, supports the outer skin barrier, and works well with actives like retinol.





**Made In France Natural Make Up and Cosmetic Formulations  
Private & White Label  
Custom Formulations**

**High Innovative Textures  
Natural Ingredient**

**Low MOQ  
Competitive Pricing**

**Skin Care & Make Up Created by Renown French formulator  
Monsieur Richard GIROUSSE  
An Expert French Cosmetic formulator of Natural Ingredient Skin  
Care, Make-Up, Innovative Textures.**





It's all about French Natural Cosmetics

# RÊVE DE LUXE *Beauty* Made In France

## Skin care

- Anti-Wrinkle
- Hydrating Face Cream
- Cheek Firming
- Lifting Cream
- Bra Firming Cream Eye
- Lips Lifting
- Firming Serum
- Foaming Cleansing Cream



## Makeup

- Foundation
- Concealer
- Highlighter
- Lipstick
- Lipgloss
- Eye shadow cream
- Mascara



Made In France Natural Make Up and Cosmetic Formulations

Private & White Label  
Custom Formulations

High Innovative Textures  
Natural Ingredient

Low MOQ  
Competitive Pricing

Skin Care & Make Up Created by Renown French formulator  
**Monsieur Richard GIROUSSE**  
An Expert  
French Cosmetic formulator of Natural Ingredient Skin Care,  
Make-Up, Innovative Textures.

### Contact

Alpine Natural Nutrients  
Tel: 1-844-792-7161  
[info@alpinenaturalnutrients.com](mailto:info@alpinenaturalnutrients.com)

